

long /e/

as in **eagle**

e _ee

[c]ei _ie _

ea

_y



2

long /o/

as in **okapi**

o _o_e

_oe

oa _

ow



4

long /oo/

as in **rooster**

oo _ue

u

u _e

_ew



6

/ow/

as in **cow**

_ow

ou _



8

/aw/

as in **hawk**

aw augh(t)

au

al(l)

all((l))



10

long /a/

as in **ape**

a

_ay

a _e

ai _



1

long /i/

as in **ibex**

i _igh

i_e _y

_ie



3

long /u/

as in **mule**

u

u_e

_ew

_ue



5

short /oo/

as in

woodpecker

oo

_u _



7

/oi/

as in **koi**

oi

_oy



9

/ar/

as in

armadillo

ar



12

short /a/

as in

anteater

a



14

short /i/

as in

iguana

i



16

short /u/

as in

umbrella

bird

u



18

/c/

as in

camel

c[a,o,u]
k[i,e] _ck

_c



20

/er/

as in

ermine

ur

er

ir



11

/or/

as in

orca

or



13

short /e/

as in

elephant

e

_ea



15

short /o/

as in

otter

o



17

/b/

as in

bear

b



19

/f/

as in **fox**

f
ph



22

/h/

as in **horse**

h



24

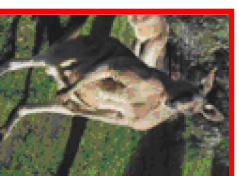
/k/

as in

kangaroo

k[i,e] c[a,o,u]

_c
_ck

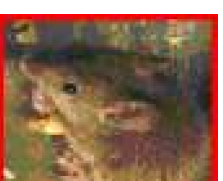


26

/m/

as in **mouse**

m



28

/p/

as in **pig**

p



30

/d/

as in **dog**

d



21

/g/

as in **goose**

g[a,o,u]



23

/j/

as in

jackrabbit

j g[e,i,y]

ge

_dge



25

/l/

as in **lion**

l



27

/n/

as in **newt**

n

kn_



29

/r/

as in

raccoon

r
wr _



32

/t/

as in **tiger**

t

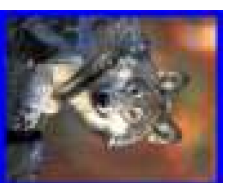


34

/w/

as in **wolf**

w



36

/y/

as in **yak**

y _



38

/sh/

as in **sheep**

sh

ti
ci



40

/q/

as in **quail**

qu



31

/s/

as in

seagull

s c[e,i,y]



33

/v/

as in

vulture

v



35

/x/

as in

x-ray fish

x



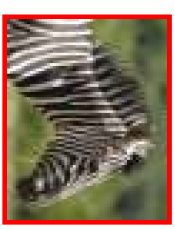
37

/z/

as in **zebra**

z

_s



39

/th/

as in

python

bl_

cl_

dr_

fr_

th

as in **black**

as in **close**

as in **draw**

as in **frame**



42

44

46

48

50

/hw/

as in **whale**

/ch/

as in

cheetah

br_

cr_

fl_

Wh_

ch_ tch

as in **brown**

as in **crow**

as in **flower**



41



43

45

47

49

gr_

pr_

scr_

sk_

sm_

as in **green**

as in **print**

as in **screw**

as in **skirt**

as in **small**

52

54

56

58

60

gl_

pl_

sc_

shr_

sl_

as in **glass**

as in **play**

as in **scope**

as in **shrunk**

as in **slide**

51

53

55

57

59

sp_

spr_

st_

sw_

tr_

as in **spell**

as in **spray**

as in **start**

as in **swim**

as in **try**

62

64

66

68

70

sn_

spl_

squ_

str_

thr_

as in **snack**

as in **splash**

as in **squid**

as in **street**

as in **threat**

61

63

65

67

69

_ft

_lk

_lp

_mp

_nd

as in **lift**

as in **elk**

as in **help**

as in **pump**

as in **sand**

72

74

76

78

80

tw_

_ld

_lm

_lt

_nch

as in **twin**

as in **child**

as in **film**

as in **belt**

as in **lunch**

71

73

75

77

79

_nk

_pt

_sp

_wn

as in **trunk**

as in **kept**

as in **crisp**

as in **clown**

82

84

86

88

**Reading
and
Spelling
Game Cards**



_ng

_nt

_sk

_st

_xt

as in **song**

as in **point**

as in **ask**

as in **first**

as in **next**

81

83

85

87

89